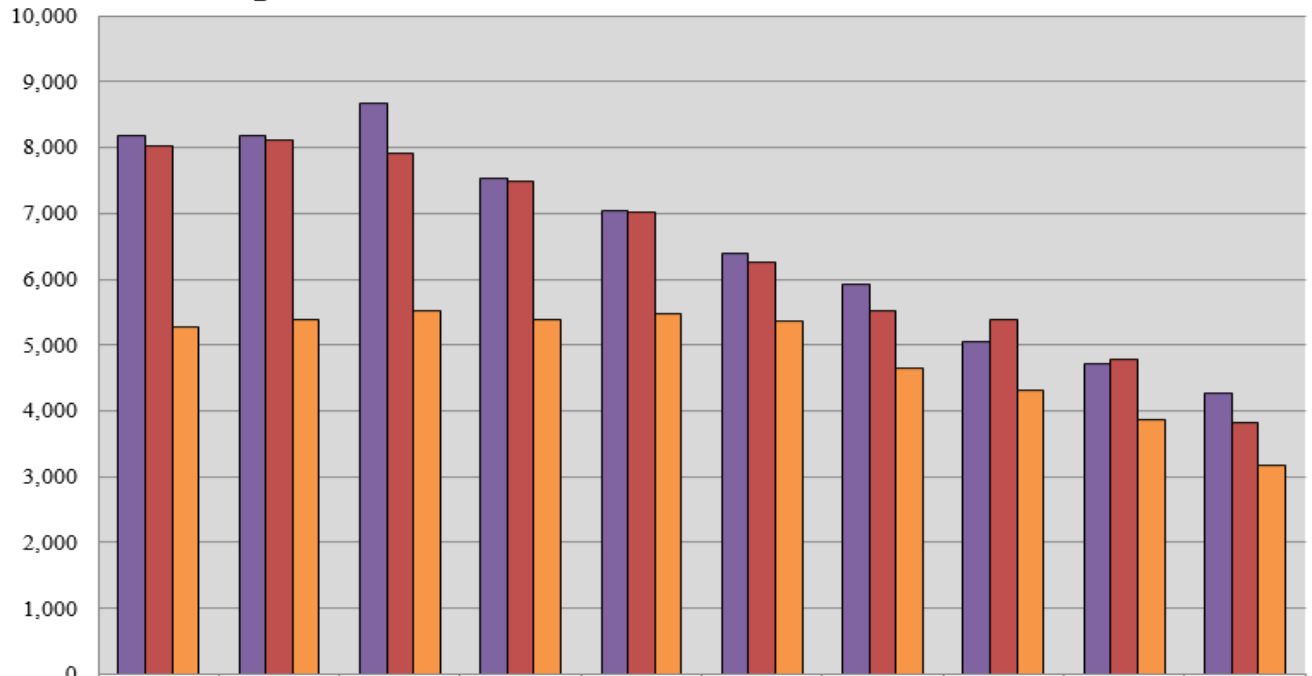


## Superior Court Criminal 10-Year Caseload Trend



	2011	2012	2013	2014	2015	2016	2017	2018	2019	2020
Filings	8,180	8,186	8,671	7,532	7,042	6,402	5,921	5,056	4,719	4,258
Dispositions	8,016	8,123	7,908	7,497	7,016	6,252	5,513	5,379	4,776	3,811
VOP Filings	5,271	5,384	5,520	5,378	5,465	5,358	4,639	4,307	3,865	3,179

Fiscal Year

VOP = Violation of Probation